

# Glarex

Stadium Flood Light

# OLM<sup>®</sup> Solution for Streamlined Sports Infrastructure Upgrades

Enhanced  
**Visibility**

Controlled  
**Glare**

Lighting  
**Redefined**



# Smarter Sports Illumination with OLM<sup>®</sup> Innovation

1

## Energy Optimization

High-efficiency luminaires regulate output intelligently, ensuring bright, uniform illumination while lowering energy use by 70%.

3

## Streamlined Installation

OLM<sup>®</sup> upgrades maximize savings by integrating cost-efficient fixtures with existing infrastructure, significantly reducing installation complexity and expenses.

2

## Resilient by Design

Designed for endurance, featuring a strong build, advanced heat regulation, low EPA configuration, and high WSR for uninterrupted performance in demanding conditions.

4

## Quick & Cost-Effective System Upkeep

The external driver configuration enables fast part replacements and diagnostics, cutting fixture servicing time and maintenance expenses.



# Industry-Leading Glare Mitigation Technology

1

**GlareX ( $GR \leq 10$ )** offers 5x better glare reduction than standard lights ( $GR \leq 50$ ) for enhanced clarity and reduced eye strain.

2

**Uniform, high-intensity LED optics** improve ball tracking and reduces eye fatigue, delivering precise illumination for professional gameplay and broadcasts.

3

By cutting light spills and directing focused illumination, GlareX creates a safer, player-friendly environment that respects nearby residential zones.



# Optimized for **NCAA-Level** Play & HD Broadcasting

Designed to meet NCAA sports lighting standards, ensuring precise light distribution, horizontal and vertical uniformity, and glare-free illumination for enhanced player performance and high-definition broadcasting.



# AeroTrack® System

## Clear, Focused Visibility for Aerial Sports

AeroTrack® System delivers sharp, real-time visuals for high-speed aerial sports with advanced stabilization and adaptive focus.

Ensures targeted illumination, preventing over-illumination and light scatter that can lead to loss of ball visibility or blurring in high-speed aerial sports.

Optimizes the visual ergonomics of the environment, significantly reducing eye strain during intense gameplay.

Assures uninterrupted ball tracking, allowing for continuous visibility of the aerial object without compromising on safety.





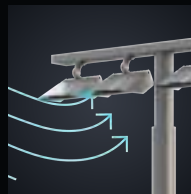
# Built for Industrial-Grade Safety, Stability & Performance

The industrial-grade design ensures stability and safety with wind-resistant engineering and IP66-rated protection, making it weatherable for tough conditions.



## Engineered for Wind Resistance & Structural Stability

The low **1.55 ft<sup>2</sup> EPA** design reduces wind load, enhancing structural stability and safety under high wind pressures.



## High Wind Load Capacity for Critical Infrastructure

Capable of withstanding wind speeds of **127.50 mph**, this solution ensures uninterrupted operations in wind-intensive environments.

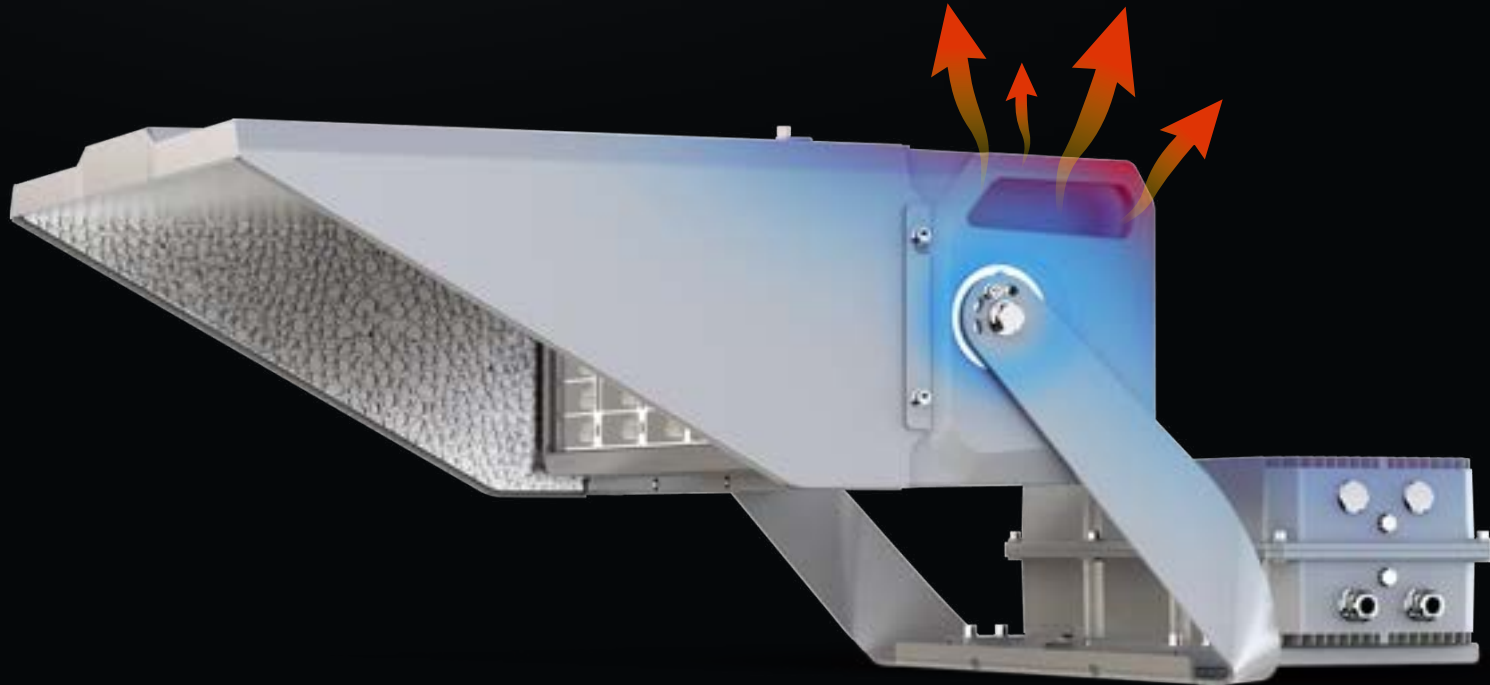


## IP66-Rated Protection for Ultimate Reliability

Tested to **IP66 standards**, this design withstands dust storms, rain, and pressurized water, ensuring flawless operation in any climate.

# Superior Heat Management for Optimal Operational Stability

Highly efficient heat dissipation prevents thermal stress in high-wattage luminaires, ensuring long-term stability, preventing lumen depreciation and extending fixture lifespan even in extreme environments.





# Retrofit and New Installation Solutions

1

## Cross Arm/Support Structure

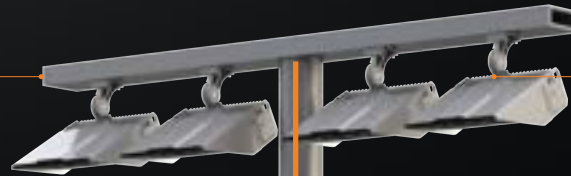
Existing support structure is replaced with tier-1 quality support arms.



2

## Remote Electrical Component Enclosure and Mounting Hardware

All the driver and electrical components are concentrated in the distribution box, making it convenient for maintenance, saving maintenance costs and providing higher security



3

## Pole Top Mounting, LED Fixture, & Shield

OLM® Technology with multifaceted optics and glare control design for precise illumination.



4

## Safety Wire with Electrical Isolation

Opto-electrical separation design to reduce material costs.



5

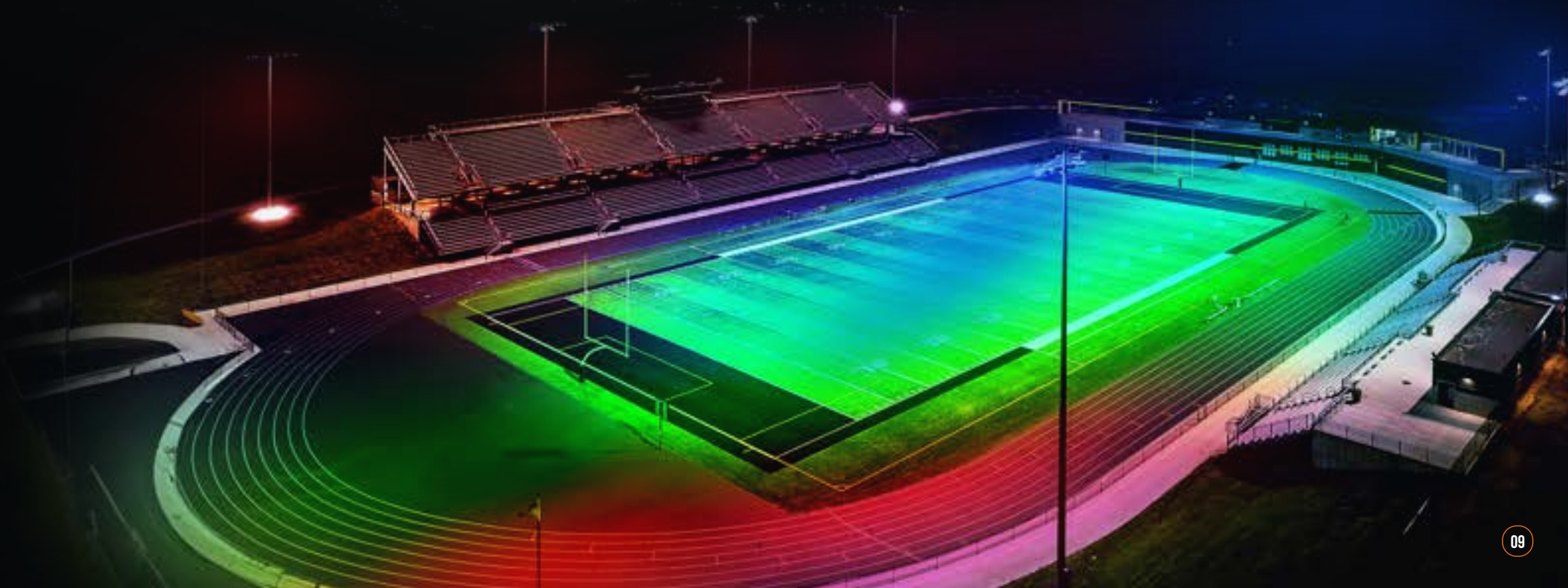
## Custom Pole Structure

Pole configured for project-specific application and optimal luminaire positioning.



# Automated **DMX Control** for Dynamic Illumination

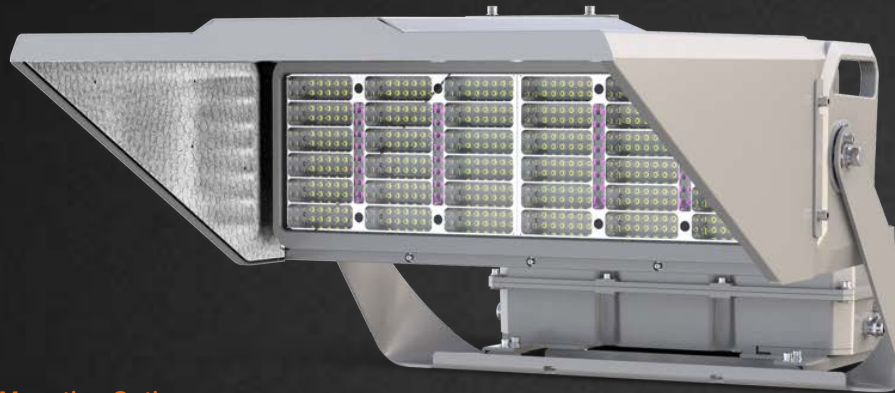
The DMX control system redefines lighting control with real-time adjustments, instant color tuning, and seamless transitions for an optimized ambiance.



# GlareX

Stadium Flood Light

## Flexible Lighting Configurations for Diverse Requirements

[Explore More](#)


### Mounting Options



**IKIO's GlareX Stadium Flood Light** is uniquely designed with Optimum Light Management (OLM) technology, incorporating louvered, multi-faceted optics and anti-glare visors. This combination ensures optical precision and enhanced visibility, allowing players to effortlessly track aerial balls while providing spectators with a strain-free viewing experience. GlareX delivers focused light output exactly where needed, minimizing light spill immensely. Additionally, the vacuum-aluminized reflector achieves over 97% reflectivity, by enhancing visual clarity.

### Electrical

Power	800W   1200W
Voltage	120-277V   277-480V
Power Factor	≥0.90

### Lighting Performance

Lumens	100000lm   150000lm
Efficacy	125lm/W
Color Temperature (CCT)	3000K   4000K   5000K   5700K   6500K
Color Rendering (CRI)	70+
Beam Angle	15°   20°   25°   40°
BUG Rating (Backlight, Uplight, and Glare)	B5-U3-G1

### Environment

Operating Temperature	-22°F ~ +122°F
Suitable Location	WET
Ingress Protection Rating (IP)	IP66
Impact Protection Rating (IK)	IK08

### Lifespan

Average Life (Hours)	100,000H (L90B50 @77°F)
Warranty (Years)	10 (Optional: 15, 20 & 25 Years)

### Construction

Housing	Die-cast Aluminum
Lens	Polycarbonate
Finish	Gray (Powder Coated)



Explore Our Energy Lifestyle Technology



(1) 844-533-4546 | [info@ikioledlighting.com](mailto:info@ikioledlighting.com)  
8470 Allison Pointe Blvd, Suite 128 Indianapolis, IN 46250  
[www.ikioledlighting.com](http://www.ikioledlighting.com)