

Installation Instructions

Lumos Downlight



Note: Read all installation instructions carefully before proceeding with the installation process.

New Construction Installation

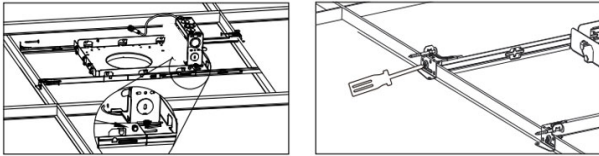
Step 1

Ensure that the power is switched off. Then, firmly secure the metal driver's junction box on the bracket.



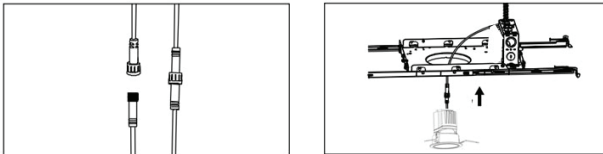
Step 3

Secure to the ceiling's T-Grid using the vertical slots at the end of each bar hanger. After that, secure the frame by tightening the edging screws to lock it in place.



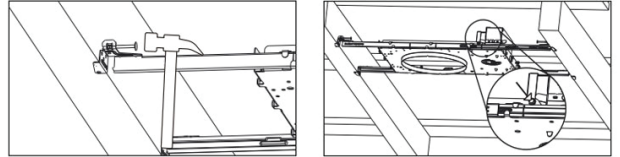
Step 5

Connect the power cord from the driver to the light fixture and then position the lamp into the ceiling.



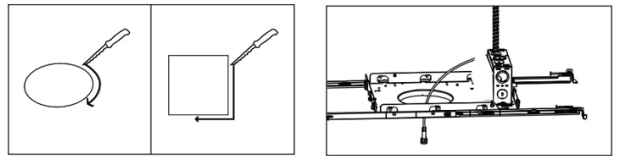
Step 2

Use a hammer to affix the bar hangers to the wooden joist using the nails. Ensure all four points are secured and adjust their positions as needed.



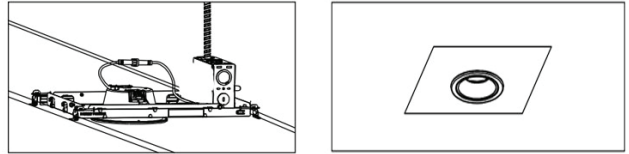
Step 4

If creating a new hole in the drywall is required, cut carefully along the marked edge. Ensure the driver cable is reachable from the ceiling opening.



Step 6

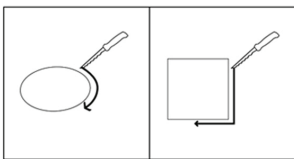
Restore power at the main source. The installation process is now complete.



Direct Mount Installation

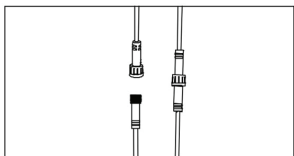
Step 1

Ensure that the power is off. Proceed to cut a hole in the ceiling tile or drywall as needed.



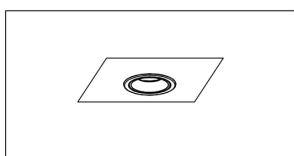
Step 3

Secure to the ceiling's T-Grid using the vertical slots located at the ends of each bar hanger. Ensure that the frame is locked in place by tightening the edging screws.



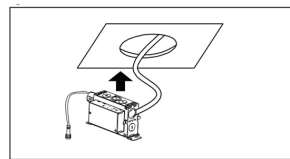
Step 5

Connect the driver's power cord to the lighting fixture and then place the lamp into the ceiling.



Step 2

Insert the source cable into the junction box through one of the available knock-outs. Make sure to secure it properly.



Step 4

If a new hole in the drywall is required, carefully cut along the edge. Ensure that you can reach the driver cable through the hole in the ceiling.

