

ITEM SKU#: 662187484266

Delphi Retrofit Troffers (2' x 2')

COMMERCIAL LIGHTING | TROFFERS

FEATURES

- CCT and power selectable capabilities for greater light control.
- Suitable for damp locations.
- Greater energy savings over traditional fluorescent fixtures.
- High-gloss finish for metal surfaces.
- Baked with powder paint for durability and better aesthetics.
- Soft, smooth, and uniform light output.
- Can be used with existing fixtures for retrofit applications.

APPLICATIONS AREAS

Offices, Hallways, Multipurpose Rooms, Conference Rooms

MOUNTING OPTIONS

- Surface Mounted. (Kit Sold Separately)

PRODUCT DETAILS

ELECTRICAL

Power (Selectable)	20 W-25 W-30 W
Voltage	120-277 V
Current	0.07 A-0.09 A-0.11 A
Power Factor	0.965
Total Harmonic Distortion (THD)	8.9%
Surge Protection	2.0 kV

LIGHTING PERFORMANCE

Lumens	2600 lm-3100 lm-3720 lm
Efficacy	124 lm/W
Color Temperature (Selectable)	3500 K-4000 K- 5000 K
Color Rendering (CRI)	82
R9 (Red Value)	5
R13 (Skin Tones)	83
Beam Angle	110°
Dimmable Lighting Control	Continuous Dimming to 10% or Below

*Lumen output are calculated at 5000 K



ENVIRONMENT

Operating Temperature	-4 °F ~ +122 °F
Suitable Location	DAMP
Ingress Protection Rating (IP)	IP20

LIFESPAN

Average Life (Hours)	50,000
Warranty (Years)	5

COMPONENTS

LED Light Source	SEOUL 3528
Driver	Simon

CONSTRUCTION

Housing	Steel Sheet
Cover Material / Lens	PMMA
Diffuser	Frosted
Base / Power Supply	Hard Wire
Finish	White

PART NUMBER & QUALIFICATIONS

Ordering Part Number	IK-RT22F-202530-CCT-D
Qualified Part Number	IK-RT22F-202530-CCT-D-es
SKU Number	662187484266

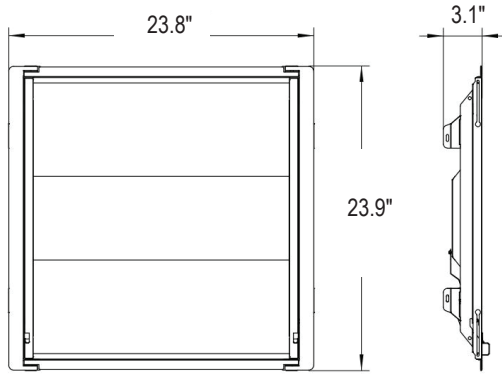

Not all product variations listed on this page are DLC qualified. Visit <https://www.designlights.org/qpl> to confirm qualification.

DIMENSIONS AND WEIGHT

Length (Inches)	23.8"
Width (Inches)	23.9"
Height (Inches)	3.1"
Net Weight (lbs)	8.66

PACKAGING

Box Dimensions (Inches)	25.57" x 25.00" x 5.24"
Box Weight (lbs)	15.69
Quantity Per Box	2



SUPPORTING DOCUMENTS

DOCUMENTS	DOCUMENT LINK
Product Sheet	View / Download
IES Files	View / Download
LM79 Report	View / Download
LM80 Report	View / Download
Installation Instructions	View / Download

ORDERING INFORMATION

SKU NUMBER	PRODUCT CODE	DESCRIPTION	QUANTITY/BOX
662187484266	IK-RT22F-202530-CCT-D	DELPHI RT 2' x 2' : 20-25-30 W / 2600-3100-3720 LM / 35-40-50 K / 120-277 V / WHITE ONLY FIXTURE / WITHOUT ACCESSORIES	2
662187485799	IK-RT22F-202530-CCT-D-e	DELPHI RT 2' x 2' : 20-25-30 W / 2600-3100-3720 LM / 35-40-50 K / 120-277 V / WHITE WITH EMERGENCY DRIVER	2
662187485829	IK-RT22F-202530-CCT-D-s	DELPHI RT 2' x 2' : 20-25-30 W / 2600-3100-3720 LM / 35-40-50 K / 120-277 V / WHITE WITH LOW VOLTAGE MICROWAVE BI-LEVEL SENSOR	2
662187485751	IK-RT22F-202530-CCT-D-es	DELPHI RT 2' x 2' : 20-25-30 W / 2600-3100-3720 LM / 35-40-50 K / 120-277 V / WHITE WITH EMERGENCY DRIVER & LOW VOLTAGE MICROWAVE BI-LEVEL SENSOR	2

ACCESSORIES

SOLD SEPARATELY

SKU NUMBER	PRODUCT CODE	DESCRIPTION	DOCUMENT LINK
662187559032	IK-FP22-SMT KIT	SURFACE MOUNT KIT	View / Download
662187485843	IK-ACC-S-ANT9C	LOW VOLTAGE MICROWAVE BI-LEVEL SENSOR	View / Download
662187485850	IK-ACC-22-FLMK	FLANGE/DRYWALL MOUNT KIT	View / Download
662187485867	IK-ACC-R-RC106	SENSOR REMOTE	View / Download
662187479033	IK-EMH-18170-HY	EMERGENCY PACK FOR LED FIXTURE 18W/90 MIN/SPLIT TYPE/L	View / Download