



Report No.: BLC2103014E-I

LM-79-08 Test Report

For

IKIO LED LIGHTING

(Brand Name: IKIO)

8470 Allison Pointe Blvd, Suite 128 Indianapolis, IN 46250

Outdoor Pole/Arm-Mounted Area and Roadway Luminaires

Architectural Flood and Spot Luminaires

Model name(s): IK-SBSLG2-150W-304050K-HV (150W)

Representative (Tested) Model:

IK-SBSLG2-150W-304050K-HV (150W,30K) (Tested at 0% CCT Setting)

IK-SBSLG2-150W-304050K-HV (150W,40K) (Tested at 50% CCT Setting)

IK-SBSLG2-150W-304050K-HV (150W,50K) (Tested at 100% CCT Setting)

Model Different: All construction and rating are the same, except CCT

Test & Report By:

Sophie Yang

Engineer: Sophie Yang

Date: 2021-04-14

Review By:

Jason Luo

Manager: Jason Luo

Laboratory: Belling Test Laboratory Co., LTD A2LA Certificate# 4810.01

Unit 401, No. 309 Xinxin Seven Road, Zengcheng District,

Guangzhou, People's Republic of China engineer@etk-utest.com

Report Format Number BL-FM-SA-012



Report No.: BLC2103014E-I

1.1 Product Information:

Organization Name	IKIO LED LIGHTING		
Brand Name	IKIO		
Model Number	IK-SBSLG2-150W-304050K-HV (150W)		
SKU (if available)	N/A		
Type of Luminaire (for integral lamps, list base type and lamp type)	Outdoor Pole/Arm-Mounted Area and Roadway Luminaires Architectural Flood and Spot Luminaires		
Rated Voltage / Frequency	277-480Vac, 50/60 Hz		
Nominal Power	150W		
Rated Initial Lamp Lumen	--		
Declared CCT	3000K, 4000K, 5000K(Power adjustable)		
LED Manufacturer	Bridgelux Inc.		
LED Model	BXEM-30C-12H-6C		
Sample Number	BLC2103014E-I1		
Luminaire Aperture (for downlights)	--	in. mm mm s	
Luminaire Length	--		
Luminaires Width	--		
Number of Units (modular products)	N/A		
Photo			
			



Report No.: BLC2103014E-I

1.2 Test Specifications:

Date of Receipt	2021-3-10
Date of Test	2021-3-17
Test item	<ol style="list-style-type: none">1. Total Luminous Flux2. Luminous Distribution Intensity3. Luminous Efficacy4. Correlated Color Temperature5. Color Rendering Index6. Chromaticity Coordinate7. Electrical Parameters
Reference Standard	<ol style="list-style-type: none">1. IES LM-79-2008 Electrical and Photometric Measurements of Solid-State Lighting Products2. ANSI C78.377-2008 Specifications for the Chromaticity of Solid State Lighting Products3. CIE 13.3-1995 Method of Measuring and Specifying Colour Rendering Properties of Light Sources4. CIE 15-2004 Technical Report Colorimetry5. IESNA LM-16-93 Practical Guide to Colorimetry of Light Source6. IESNA TM-16-05 Technical Memorandum on Light Emitting Diode (LED) Sources and Systems
Reference Work Instruction	BL-QP-033

1.3 Test Methods

1) Photometric and Light Distribution Measurement – Goniophotometer Method:

Photometric parameters were measured using the goniophotometer and software. The ambient temperature shall be maintained at $25^{\circ}\text{C} \pm 1^{\circ}\text{C}$, measured at a point not more than 1 m from the sample and at the same height as the sample. The sample was operated at 120 or rated Volts AC, 60Hz. It was stabilized before measurement was made. Luminous flux, luminaire efficacy, zonal lumen were calculated from the software taken at 1° vertical intervals and 22.5° horizontal intervals.

2) Chromaticity Measurement – Sphere-Spectroradiometer Method:

Chromaticity parameters were measured using an integrating sphere, a spectroradiometer and software. The ambient temperature condition inside the sphere was maintained at $25^{\circ}\text{C} \pm 1^{\circ}\text{C}$. The sample measurements were made using a spectroradiometer connected by a fiber optic cable and detector through the detector port of the integrating sphere. The sample was operated at 120 or rated Volts AC, 60Hz. It was stabilized before measurement was made. Chromaticity coordinates, correlated color temperature and color rendering index were calculated from the spectral power distribution taken at 5 nm intervals over the range of 380 to 780 nm.

3) Electrical Measurements:

Electrical parameters were measured using power meters incorporated in goniophotometer or sphere-spectroradiometer system. The ambient temperature surrounding the sample was maintained at $25^{\circ}\text{C} \pm 1^{\circ}\text{C}$. The sample was operated at 120 or rated Volts AC, 60Hz. It was stabilized before measurement was made. Voltage, frequency, current, power, power factor and total harmonic distortion were measured by and read from the power meter.



Report No.: BLC2103014E-I

2.1 Electrical, Photometric and Chromaticity Measurements

(Refer to Work Instruction BL-QP-033)

Test date	2021-3-17	Test Ambient:	25.2 °C
Test Orientation	As intended	Stabilization Time (min)	90
Model Number	IK-SBSLG2-150W-304050K-HV (150W,30K) (Tested at 0% CCT Setting)		

Electrical Measurement:

Sample No.	Voltage (Vac)	Frequency (Hz)	Current (A)	Power (W)	Power Factor	THD %
BLC210301 4E-I1	277.0	60	0.545	150.87	0.999	3.09
	480.0	60	0.321	149.58	0.971	4.07
DLC Pass Criteria					$\geq 0.9(-3\%)$	$\leq 20(+5)$

Chromaticity Measurement - Sphere-Spectroradiometer Method:

Parameter	Result	Special Color Rendering Indices			
Test Voltage (V)	277.0	R1	68	R9	-35
Frequency (Hz)	60	R2	82	R10	59
CCT (K)	2986	R3	94	R11	64
Duv	-0.0001	R4	69	R12	52
Chromaticity (x, y)	x=0.4378 y=0.4042	R5	68	R13	70
Chromaticity (u', v')	u(u')=0.2511 v'=0.5216	R6	76	R14	97
Color Rendering Index (CRI)	72	R7	76	R15	60
R9	-35	R8	42	--	--
Rf	75	--	--	--	--
Rg	95	--	--	--	--
Rcs,h1(%)	-17				

Photometric Measurement – Goniophotometer Method:

Parameter	Result		DLC V5.1 Pass Criteria
Test Voltage (V)	277.0	480.0	--
Frequency (Hz)	60	60	
Total Luminous (lm)	20263.2	20154.0	>=10000(-10%)
Luminous Efficacy (lm/W)	134.31	134.74	Premium: >= 120(-3%)
Most worst Luminous/Highest	133.59		
Zonal lumens in the 0-90 °zone (%)	100	--	Category 1: >=100(-1) Category 2: >=85(-3)
Zonal lumens in the 80-90 °zone (%)	2.0	--	<=10(+3)
Beam Angle (°)	134.9	--	--
Center Beam Candle Power (cd)	4612	--	--

Laboratory: Belling Test Laboratory Co., LTD A2LA Certificate# 4810.01

Unit 401, No. 309 Xinxin Seven Road, Zengcheng District,

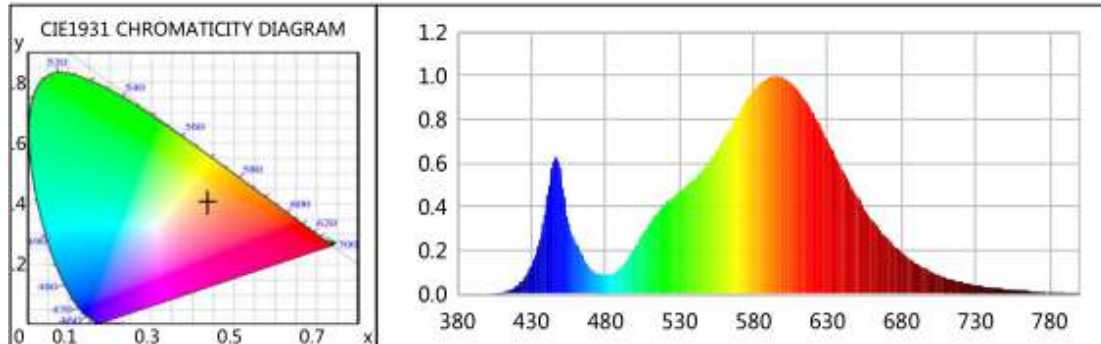
Guangzhou, People's Republic of China engineer@etk-utest.com

Report Format Number BL-FM-SA-012



Report No.: BLC2103014E-I

Spectral Power Distribution & Chromaticity Diagram



WL(nm)	PL	PE(mW/nm)	WL(nm)	PL	PE(mW/nm)	WL(nm)	PL	PE(mW/nm)
380	0.0003	0.1290	525	0.4407	183.2938	670	0.2549	106.0455
385	0.0005	0.2165	530	0.4690	195.0815	675	0.2194	91.2624
390	0.0003	0.1366	535	0.4969	206.7099	680	0.1906	79.2887
395	0.0007	0.2778	540	0.5296	220.2801	685	0.1626	67.6279
400	0.0009	0.3565	545	0.5614	233.5151	690	0.1395	58.0426
405	0.0027	1.1043	550	0.6048	251.5738	695	0.1190	49.4846
410	0.0070	2.9002	555	0.6529	271.5805	700	0.1017	42.3073
415	0.0164	6.8151	560	0.7086	294.7631	705	0.0868	36.1008
420	0.0360	14.9730	565	0.7664	318.8100	710	0.0738	30.6799
425	0.0713	29.6498	570	0.8263	343.7290	715	0.0633	26.3158
430	0.1308	54.4183	575	0.8841	367.7568	720	0.0540	22.4772
435	0.2272	94.4932	580	0.9323	387.8033	725	0.0461	19.1663
440	0.4042	168.1354	585	0.9665	402.0364	730	0.0393	16.3388
445	0.6088	253.2423	590	0.9896	411.6406	735	0.0322	13.3853
450	0.5388	224.1202	595	0.9983	415.2457	740	0.0291	12.0946
455	0.3247	135.0651	600	0.9937	413.3248	745	0.0243	10.0962
460	0.2332	96.9948	605	0.9695	403.2903	750	0.0210	8.7374
465	0.1701	70.7459	610	0.9345	388.7153	755	0.0184	7.6500
470	0.1127	46.8883	615	0.8873	369.0718	760	0.0159	6.5991
475	0.0910	37.8728	620	0.8298	345.1670	765	0.0138	5.7438
480	0.0865	35.9991	625	0.7659	318.5825	770	0.0119	4.9587
485	0.0931	38.7088	630	0.6986	290.5986	775	0.0092	3.8258
490	0.1177	48.9442	635	0.6338	263.6381	780	0.0077	3.2194
495	0.1610	66.9742	640	0.5663	235.5505	785	0.0059	2.4480
500	0.2138	88.9279	645	0.5049	210.0178	790	0.0061	2.5389
505	0.2681	111.5258	650	0.4440	184.6991	795	0.0054	2.2293
510	0.3236	134.6182	655	0.3897	162.0824	800	0.0041	1.7042
515	0.3691	153.5320	660	0.3390	141.0042			
520	0.4073	169.4126	665	0.2950	122.7243			

Laboratory: Belling Test Laboratory Co., LTD A2LA Certificate# 4810.01

Unit 401, No. 309 Xinxin Seven Road, Zengcheng District,
Guangzhou, People's Republic of China engineer@etk-utest.com

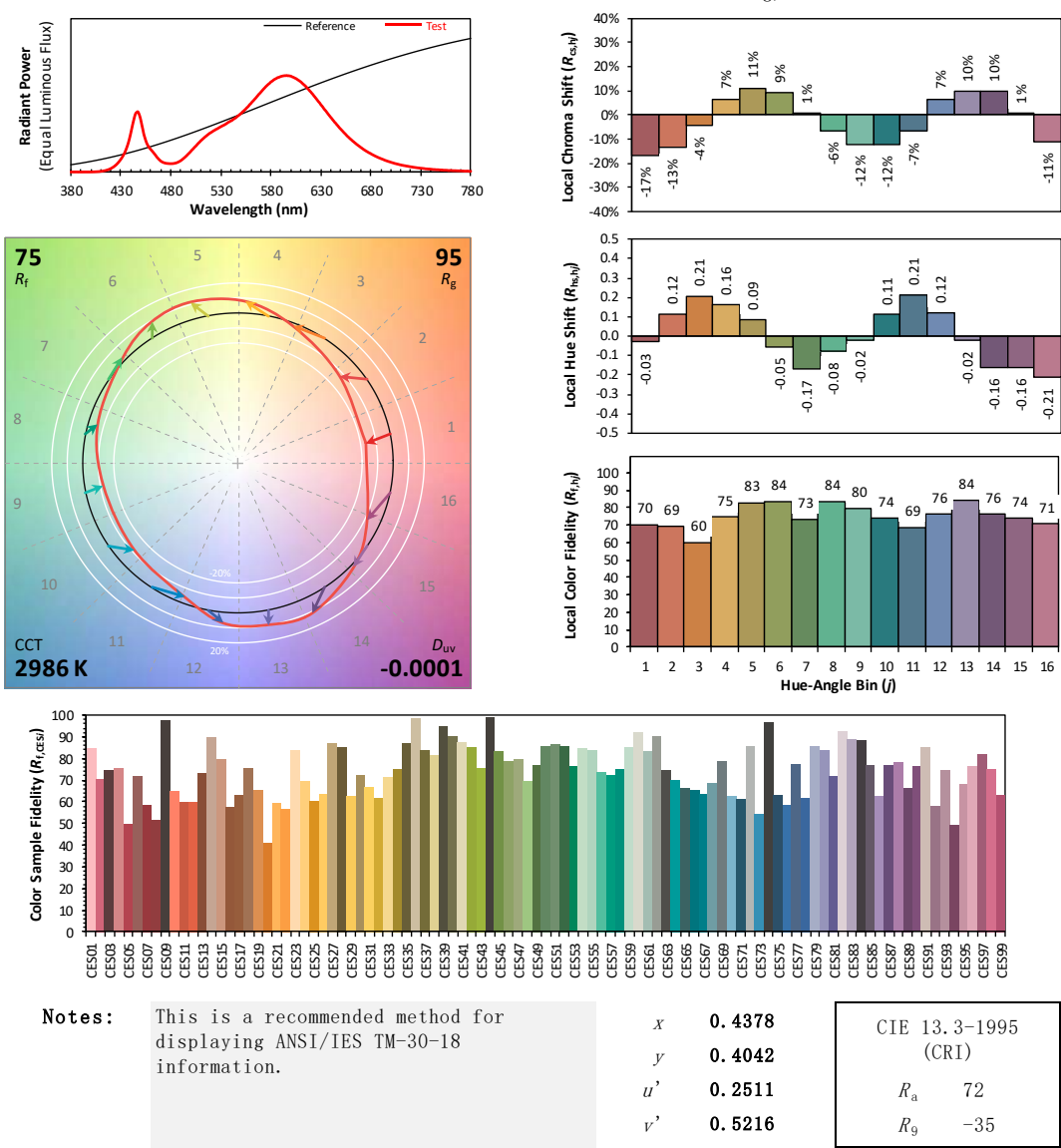
Report Format Number BL-FM-SA-012



TM30

ANSI/IES TM-30-18 Color Rendition Report

Source: BXEM-30C-12H-6C
Date: 2021/3/17
Manufacturer: IKIO LED LIGHTING
Model: IK-SBSLG2-150W-304050K-HV (150W, 30K) (Tested at 0% CC Setting)



Colors are for visual orientation purposes only. Created with the ANSI/IES TM-30-18 Calculator Version 2.00.



Report No.: BLC2103014E-I

Zonal Lumen Tabulation

Zonal Lumen Summary

Zone	Lumens	% Lamp	% Luminaire
0-30	3,818.8	18.8%	18.8%
0-40	6,666.1	32.9%	32.9%
0-60	14,464.7	71.4%	71.4%
60-90	5,797.3	28.6%	28.6%
70-100	2,285.0	11.3%	11.3%
90-120	0	0%	0%
0-90	20,261.9	100%	100%
90-180	0	0%	0%
0-180	20,261.9	100%	100%

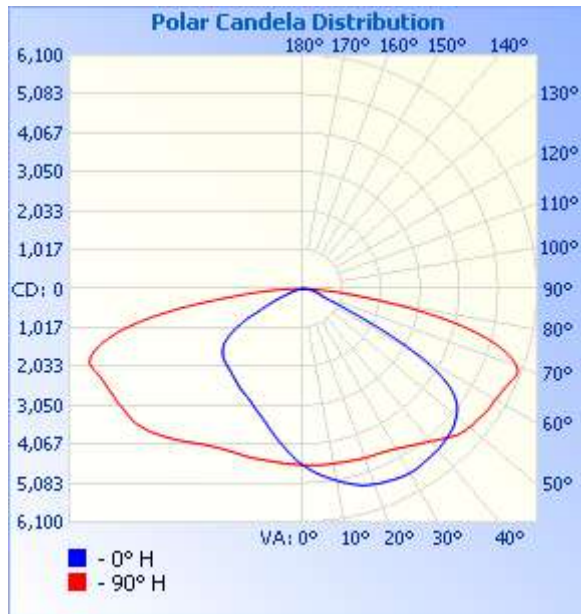
Lumens Per Zone

Zone	Lumens	% Total	Zone	Lumens	% Total
0-10	438.9	2.2%	90-100	0	0%
10-20	1,292.3	6.4%	100-110	0	0%
20-30	2,087.7	10.3%	110-120	0	0%
30-40	2,847.3	14.1%	120-130	0	0%
40-50	3,616.6	17.8%	130-140	0	0%
50-60	4,181.9	20.6%	140-150	0	0%
60-70	3,512.2	17.3%	150-160	0	0%
70-80	1,886.2	9.3%	160-170	0	0%
80-90	398.8	2.0%	170-180	0	0%



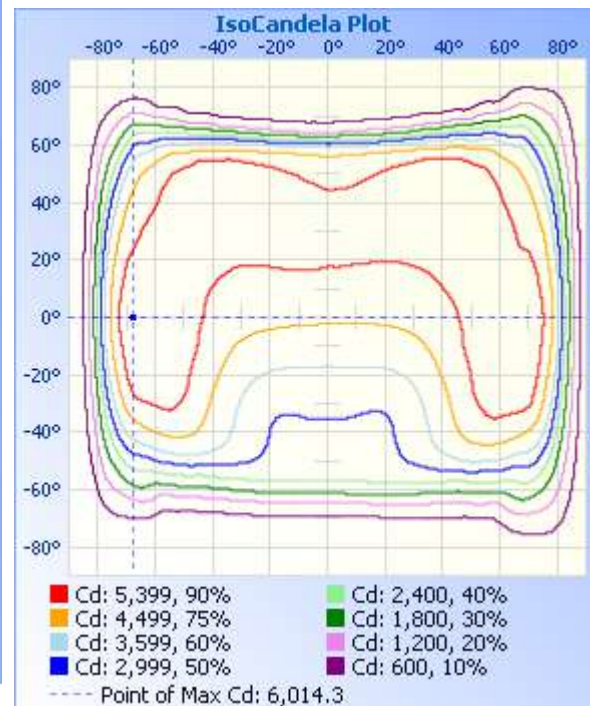
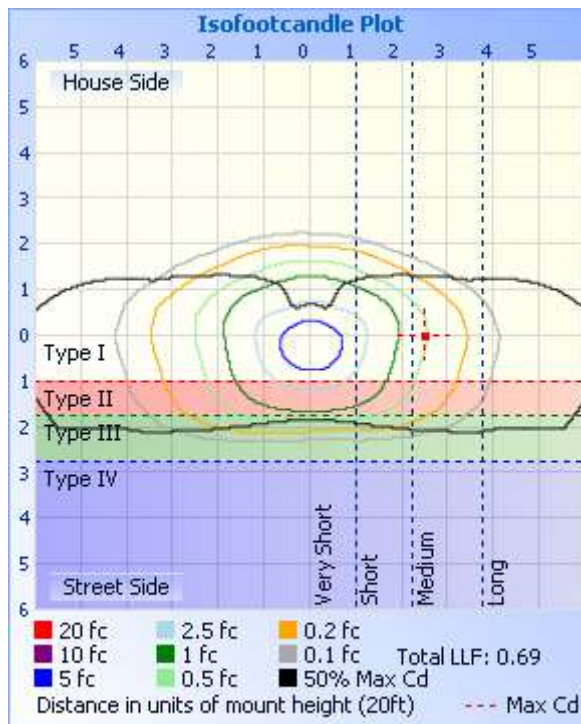
Report No.: BLC2103014E-I

Photometric Data



	Illuminance at a Distance	
	Center Beam fc	Beam Width
17.0ft	16.0 fc	47.0 ft 199.3 ft
34.0ft	3.99 fc	93.9 ft 398.6 ft
51.0ft	1.77 fc	140.9 ft 597.9 ft
68.0ft	1.00 fc	187.8 ft 797.2 ft
85.0ft	0.64 fc	234.8 ft 996.6 ft
102.0ft	0.44 fc	281.7 ft 1,195.9 ft

■ Vert. Spread: 108.2°
■ Horiz. Spread: 160.6°





Report No.: BLC2103014E-I

Candela Table - Type C

	0	10	20	30	40	50	60	70	80	90	100	110	120	130	140	150	160	170	180	190	200	210	220	230	240	250	260	270	280	290	300	310	320	330	340	350	360
0	4612	4612	4612	4612	4612	4612	4612	4612	4612	4612	4612	4612	4612	4612	4612	4612	4612	4612	4612	4612	4612	4612	4612	4612	4612	4612	4612	4612	4612	4612	4612	4612	4612	4612	4612	4612	4612
1	4666	4668	4677	4666	4655	4647	4645	4634	4627	4616	4600	4594	4583	4575	4568	4553	4555	4557	4559	4546	4555	4560	4565	4571	4581	4592	4599	4608	4619	4630	4643	4648	4656	4661	4674	4678	4666
2	4720	4728	4734	4717	4698	4684	4679	4655	4640	4622	4596	4578	4556	4538	4512	4500	4498	4498	4499	4486	4500	4505	4509	4532	4548	4569	4584	4603	4625	4647	4669	4686	4697	4708	4723	4731	4720
3	4773	4783	4786	4769	4749	4723	4708	4682	4652	4625	4586	4561	4531	4497	4476	4449	4445	4442	4429	4424	4443	4450	4460	4489	4518	4544	4573	4600	4638	4670	4693	4724	4745	4758	4773	4785	4773
4	4827	4841	4840	4819	4788	4760	4742	4704	4669	4629	4577	4546	4501	4459	4424	4393	4386	4376	4356	4358	4381	4394	4406	4447	4480	4523	4563	4598	4643	4686	4719	4757	4784	4806	4821	4840	4827
5	4872	4899	4884	4863	4832	4801	4769	4728	4679	4633	4568	4530	4470	4420	4378	4342	4328	4307	4291	4295	4321	4337	4355	4400	4445	4500	4551	4590	4649	4705	4745	4791	4824	4852	4872	4892	4872
6	4917	4951	4939	4909	4874	4838	4800	4751	4691	4633	4560	4507	4444	4383	4331	4290	4265	4243	4225	4234	4257	4281	4313	4358	4412	4474	4542	4592	4658	4722	4770	4824	4864	4894	4928	4944	4917
7	4959	4993	4984	4958	4911	4876	4827	4777	4703	4632	4553	4491	4416	4347	4280	4237	4211	4182	4161	4167	4198	4228	4261	4316	4383	4461	4533	4589	4662	4742	4795	4856	4901	4936	4974	4998	4959
8	5007	5039	5031	5002	4954	4910	4853	4794	4710	4637	4542	4466	4389	4315	4235	4187	4151	4124	4094	4108	4142	4168	4214	4277	4353	4438	4522	4589	4668	4757	4819	4885	4934	4976	5021	5044	5007
9	5048	5085	5074	5049	4994	4945	4876	4816	4721	4636	4535	4456	4358	4280	4188	4138	4095	4063	4035	4049	4087	4113	4169	4238	4323	4419	4513	4587	4680	4775	4845	4918	4968	5011	5069	5091	5048
10	5099	5123	5117	5089	5037	4978	4901	4832	4736	4635	4529	4442	4331	4235	4143	4083	4028	3998	3971	3993	4031	4066	4122	4197	4289	4397	4500	4585	4686	4789	4869	4946	5003	5056	5105	5132	5099
11	5139	5158	5157	5133	5070	5005	4924	4856	4745	4642	4522	4421	4299	4196	4099	4033	3970	3941	3908	3931	3968	4011	4078	4158	4260	4379	4488	4586	4689	4805	4894	4972	5033	5091	5144	5174	5139
12	5182	5204	5194	5172	5102	5041	4953	4877	4758	4649	4521	4407	4273	4156	4051	3975	3914	3880	3847	3876	3911	3956	4033	4120	4231	4353	4477	4592	4702	4822	4916	4998	5067	5128	5183	5208	5182
13	5221	5243	5237	5209	5136	5070	4982	4897	4772	4653	4520	4388	4246	4118	4003	3914	3858	3824	3791	3811	3857	3905	3980	4078	4201	4337	4465	4592	4715	4834	4943	5027	5098	5162	5218	5254	5221
14	5264	5281	5276	5245	5167	5102	5008	4912	4784	4658	4520	4375	4213	4081	3946	3859	3802	3765	3725	3758	3806	3850	3925	4040	4176	4321	4461	4598	4729	4853	4963	5054	5125	5198	5254	5292	5264
15	5300	5317	5315	5276	5199	5135	5036	4929	4792	4663	4514	4362	4190	4046	3903	3807	3744	3715	3667	3701	3754	3799	3876	4001	4150	4305	4455	4605	4740	4873	4989	5078	5154	5232	5285	5324	5300
16	5339	5353	5347	5306	5232	5169	5059	4943	4804	4674	4514	4342	4168	3999	3853	3757	3694	3656	3618	3653	3699	3745	3829	3966	4119	4290	4448	4611	4754	4891	5014	5105	5179	5261	5319	5355	5339

Laboratory: Belling Test Laboratory Co., LTD A2LA Certificate# 4810.01
Unit 401, No. 309 Xinxin Seven Road, Zengcheng District,
Guangzhou, People's Republic of China engineer@etk-utest.com

Report Format Number BL-FM-SA-012



Report No.: BLC2103014E-I

17	5373	5386	5376	5339	5267	5196	5079	4957	4813	4680	4505	4330	4136	3958	3807	3707	3638	3609	3566	3602	3640	3694	3784	3928	4085	4275	4447	4617	4764	4907	5039	5131	5208	5288	5347	5377	5373
18	5400	5412	5403	5369	5299	5227	5102	4970	4822	4688	4504	4317	4104	3922	3762	3656	3590	3567	3517	3556	3594	3646	3741	3882	4060	4268	4447	4621	4772	4924	5062	5159	5237	5308	5372	5399	5400
19	5416	5434	5427	5392	5328	5257	5126	4990	4837	4699	4503	4304	4073	3882	3721	3614	3548	3522	3477	3514	3549	3600	3694	3840	4028	4257	4448	4626	4781	4942	5081	5189	5267	5335	5396	5416	5416
20	5439	5458	5457	5420	5353	5280	5147	5003	4847	4708	4503	4290	4043	3843	3675	3566	3497	3476	3439	3475	3506	3555	3655	3802	3999	4244	4441	4629	4792	4957	5102	5222	5298	5359	5415	5435	5439
21	5457	5471	5477	5445	5379	5297	5166	5020	4861	4715	4502	4276	4015	3804	3633	3522	3455	3439	3400	3438	3460	3507	3612	3760	3969	4229	4437	4632	4805	4970	5123	5244	5322	5384	5430	5448	5457
22	5472	5489	5500	5466	5407	5314	5184	5033	4872	4720	4498	4261	3987	3764	3591	3476	3414	3405	3359	3401	3418	3466	3573	3728	3941	4216	4440	4638	4815	4984	5136	5261	5345	5413	5446	5465	5472
23	5486	5506	5517	5486	5430	5334	5197	5050	4884	4729	4500	4246	3962	3727	3549	3435	3372	3366	3320	3362	3372	3420	3533	3691	3910	4196	4437	4641	4829	4998	5155	5282	5366	5435	5464	5478	5486
24	5496	5518	5533	5504	5452	5348	5211	5064	4900	4733	4498	4236	3937	3692	3516	3384	3333	3327	3282	3319	3332	3377	3494	3653	3885	4184	4442	4654	4844	5015	5172	5299	5384	5458	5482	5497	5496
25	5512	5529	5552	5523	5472	5367	5229	5080	4914	4744	4503	4223	3912	3659	3472	3343	3291	3294	3248	3289	3297	3335	3450	3622	3857	4174	4447	4664	4859	5033	5189	5317	5396	5473	5500	5514	5512
26	5528	5538	5566	5545	5494	5389	5246	5097	4928	4756	4509	4219	3890	3628	3430	3303	3253	3256	3218	3251	3254	3288	3411	3591	3826	4161	4447	4680	4879	5052	5213	5339	5412	5487	5517	5522	5528
27	5543	5550	5583	5566	5516	5408	5264	5119	4948	4775	4516	4214	3873	3600	3393	3267	3213	3221	3193	3216	3214	3248	3377	3557	3803	4151	4453	4693	4898	5074	5234	5355	5431	5501	5526	5523	5543
28	5555	5561	5595	5584	5533	5427	5282	5139	4962	4791	4529	4215	3863	3574	3358	3233	3181	3192	3168	3186	3183	3212	3336	3526	3785	4142	4464	4713	4921	5098	5262	5372	5452	5519	5536	5527	5555
29	5563	5574	5603	5600	5550	5442	5300	5157	4987	4811	4545	4217	3852	3552	3321	3196	3150	3159	3148	3155	3150	3180	3296	3493	3773	4140	4478	4735	4946	5121	5282	5399	5473	5535	5540	5535	5563
30	5563	5582	5615	5612	5565	5464	5320	5176	5006	4834	4565	4226	3844	3529	3287	3162	3122	3128	3125	3127	3120	3147	3256	3470	3767	4146	4495	4760	4974	5146	5307	5425	5490	5551	5543	5539	5563
31	5566	5586	5621	5624	5583	5481	5339	5193	5021	4859	4587	4243	3844	3509	3263	3133	3096	3101	3103	3100	3091	3115	3224	3449	3760	4151	4519	4786	5006	5175	5328	5443	5504	5559	5546	5548	5566
32	5559	5587	5628	5636	5605	5501	5362	5213	5050	4890	4613	4256	3848	3500	3238	3104	3068	3076	3082	3073	3059	3083	3200	3426	3757	4169	4544	4816	5034	5203	5356	5469	5523	5571	5550	5549	5559
33	5553	5586	5636	5650	5619	5519	5378	5238	5079	4925	4641	4278	3852	3486	3220	3079	3042	3055	3058	3053	3035	3055	3173	3415	3759	4193	4577	4848	5066	5242	5380	5491	5542	5580	5553	5545	5553
34	5538	5587	5638	5664	5632	5537	5403	5258	5104	4957	4676	4300	3859	3484	3206	3056	3015	3031	3030	3028	3015	3034	3150	3404	3759	4217	4619	4890	5096	5268	5406	5509	5565	5590	5556	5541	5538
35	5524	5582	5642	5681	5644	5552	5425	5277	5130	4992	4711	4333	3871	3479	3190	3036	2997	3010	3005	3006	2995	3009	3133	3394	3773	4247	4660	4925	5134	5295	5433	5531	5582	5599	5557	5540	5524

Laboratory: Belling Test Laboratory Co., LTD A2LA Certificate# 4810.01
Unit 401, No. 309 Xinxin Seven Road, Zengcheng District,
Guangzhou, People's Republic of China engineer@etk-utest.com

Report Format Number BL-FM-SA-012



Report No.: BLC2103014E-I

36	5517	5581	5643	5685	5656	5575	5448	5307	5156	5035	4758	4366	3893	3476	3175	3019	2977	2998	2980	2984	2976	2992	3113	3389	3786	4287	4707	4971	5171	5323	5458	5552	5600	5605	5556	5536	5517
37	5514	5573	5640	5693	5674	5599	5466	5338	5192	5072	4806	4408	3918	3485	3167	3009	2960	2974	2953	2961	2955	2974	3102	3389	3806	4325	4756	5016	5203	5352	5482	5577	5616	5610	5555	5524	5514
38	5502	5556	5635	5693	5686	5614	5493	5373	5231	5116	4857	4455	3943	3492	3164	3000	2945	2953	2936	2937	2938	2960	3096	3393	3828	4367	4809	5060	5246	5382	5514	5596	5630	5616	5554	5516	5502
39	5494	5547	5630	5691	5698	5630	5513	5401	5272	5160	4909	4497	3974	3507	3166	2988	2931	2938	2915	2918	2922	2947	3088	3402	3857	4420	4862	5107	5287	5417	5540	5615	5646	5619	5548	5509	5494
40	5484	5539	5622	5698	5706	5643	5538	5429	5306	5202	4969	4549	4009	3524	3165	2989	2917	2926	2892	2902	2910	2938	3091	3416	3886	4474	4920	5154	5328	5454	5568	5639	5656	5623	5540	5495	5484
41	5466	5528	5612	5699	5719	5661	5558	5458	5347	5253	5029	4606	4044	3547	3174	2986	2905	2908	2872	2885	2894	2939	3091	3429	3925	4530	4980	5198	5367	5485	5596	5659	5667	5624	5534	5485	5466
42	5448	5519	5603	5702	5725	5675	5574	5480	5379	5303	5097	4666	4085	3568	3188	2983	2894	2895	2861	2870	2884	2932	3098	3446	3970	4596	5040	5243	5404	5516	5621	5678	5678	5628	5527	5472	5448
43	5428	5502	5598	5705	5730	5686	5595	5505	5412	5360	5161	4723	4132	3589	3201	2984	2889	2886	2846	2858	2872	2930	3110	3471	4016	4656	5108	5289	5438	5544	5650	5698	5691	5633	5523	5456	5428
44	5407	5492	5595	5706	5739	5703	5605	5527	5439	5416	5224	4793	4180	3611	3209	2988	2881	2874	2833	2842	2862	2932	3119	3501	4062	4718	5174	5335	5461	5576	5679	5720	5693	5632	5518	5438	5407
45	5388	5474	5591	5703	5750	5714	5623	5545	5473	5471	5289	4860	4221	3640	3223	2988	2880	2861	2818	2833	2852	2937	3132	3529	4111	4788	5235	5382	5488	5603	5700	5741	5705	5635	5514	5424	5388
46	5366	5461	5589	5703	5759	5730	5634	5566	5499	5528	5359	4928	4269	3668	3237	2991	2873	2846	2812	2818	2848	2934	3148	3560	4164	4852	5294	5425	5509	5626	5719	5764	5716	5633	5503	5405	5366
47	5340	5442	5584	5702	5773	5750	5651	5589	5529	5568	5423	4998	4319	3695	3255	2997	2873	2831	2794	2808	2842	2940	3165	3590	4227	4919	5346	5471	5533	5648	5735	5783	5726	5634	5496	5377	5340
48	5309	5412	5572	5701	5783	5767	5671	5607	5550	5602	5476	5069	4380	3721	3264	2998	2865	2813	2778	2795	2830	2939	3174	3622	4282	4986	5397	5506	5557	5670	5752	5803	5739	5636	5482	5350	5309
49	5260	5386	5555	5704	5798	5786	5686	5625	5574	5629	5526	5142	4432	3749	3276	3001	2856	2801	2757	2774	2826	2941	3186	3653	4337	5057	5449	5542	5583	5683	5769	5826	5755	5642	5463	5323	5260
50	5215	5348	5537	5706	5811	5803	5706	5633	5589	5651	5576	5203	4473	3768	3284	3001	2849	2780	2730	2754	2812	2945	3204	3680	4393	5130	5506	5571	5600	5694	5788	5844	5768	5642	5439	5296	5215
51	5165	5298	5509	5698	5826	5818	5718	5645	5598	5670	5613	5269	4519	3786	3289	2991	2837	2751	2699	2727	2798	2942	3213	3705	4454	5187	5554	5600	5616	5706	5807	5856	5781	5635	5416	5259	5165
52	5108	5242	5475	5683	5839	5837	5726	5657	5603	5684	5647	5328	4567	3801	3281	2980	2813	2723	2669	2692	2780	2934	3224	3726	4507	5247	5595	5620	5630	5711	5824	5875	5796	5625	5381	5205	5108
53	5027	5169	5431	5668	5850	5858	5736	5665	5602	5698	5682	5381	4611	3803	3265	2955	2782	2677	2625	2652	2755	2920	3225	3744	4555	5304	5632	5632	5633	5719	5830	5888	5808	5613	5344	5133	5027
54	4920	5078	5376	5645	5860	5876	5749	5667	5603	5714	5714	5426	4637	3794	3240	2924	2739	2625	2577	2601	2720	2900	3209	3761	4600	5360	5664	5635	5629	5724	5843	5909	5818	5588	5286	5055	4920

Laboratory: Belling Test Laboratory Co., LTD A2LA Certificate# 4810.01
Unit 401, No. 309 Xinxin Seven Road, Zengcheng District,
Guangzhou, People's Republic of China engineer@etk-utest.com
Report Format Number BL-FM-SA-012



Report No.: BLC2103014E-I

55	4789	4949	5291	5610	5859	5900	5759	5664	5601	5742	5749	5456	4650	3773	3200	2878	2688	2561	2513	2546	2670	2868	3185	3759	4636	5414	5698	5639	5623	5727	5855	5922	5822	5556	5219	4941	4789
56	4630	4795	5175	5567	5853	5922	5767	5654	5597	5757	5779	5481	4657	3737	3144	2817	2608	2484	2438	2478	2610	2823	3162	3748	4672	5446	5726	5642	5622	5729	5863	5936	5826	5508	5115	4789	4630
57	4419	4607	5038	5497	5832	5932	5777	5637	5592	5773	5810	5499	4654	3686	3081	2729	2525	2396	2345	2392	2539	2761	3119	3726	4680	5478	5754	5656	5611	5720	5872	5954	5816	5438	4972	4603	4419
58	4168	4372	4839	5394	5810	5942	5786	5627	5581	5779	5838	5505	4629	3609	2992	2635	2424	2288	2226	2304	2455	2686	3059	3688	4682	5504	5786	5674	5592	5706	5871	5964	5789	5352	4800	4365	4168
59	3825	4079	4606	5247	5774	5938	5789	5612	5574	5781	5870	5501	4576	3522	2870	2528	2307	2163	2097	2175	2354	2594	2974	3625	4666	5516	5812	5683	5578	5686	5872	5966	5758	5227	4600	4093	3825
60	3441	3671	4302	5058	5712	5934	5794	5598	5560	5794	5893	5478	4502	3398	2743	2393	2167	2014	1941	2034	2229	2488	2872	3545	4630	5527	5840	5687	5561	5668	5870	5960	5707	5070	4325	3712	3441
61	2995	3212	3900	4791	5618	5911	5788	5579	5540	5813	5913	5439	4389	3241	2598	2251	2001	1841	1784	1882	2081	2355	2753	3447	4566	5521	5867	5694	5549	5652	5865	5940	5631	4856	3969	3279	2995
62	2496	2707	3435	4476	5467	5874	5779	5557	5534	5832	5927	5370	4259	3075	2441	2082	1836	1668	1616	1702	1926	2215	2618	3305	4490	5501	5891	5703	5529	5628	5861	5911	5512	4578	3539	2774	2496
63	1993	2219	2914	4110	5243	5813	5755	5528	5527	5850	5942	5286	4097	2888	2259	1910	1664	1386	1298	1463	1761	2060	2453	3151	4385	5458	5921	5716	5511	5596	5846	5859	5339	4236	3081	2311	1993
64	1495	1690	2380	3611	4973	5717	5733	5496	5516	5870	5940	5166	3908	2690	2080	1734	1372	1198	1137	1237	1584	1897	2286	2975	4244	5400	5948	5729	5488	5563	5819	5776	5103	3793	2554	1803	1495
65	1121	1256	1867	3070	4606	5597	5694	5470	5501	5902	5918	5016	3685	2459	1901	1557	1185	1041	999	1094	1298	1704	2111	2781	4060	5319	5967	5741	5474	5530	5783	5683	4813	3293	2055	1359	1121
66	860	970	1437	2527	4192	5416	5631	5442	5483	5938	5895	4837	3414	2250	1720	1269	1036	910	881	962	1127	1521	1930	2572	3862	5213	5982	5765	5452	5498	5740	5547	4428	2801	1573	1020	860
67	693	763	1090	1997	3701	5186	5556	5411	5480	5983	5863	4631	3162	2050	1535	1097	908	802	773	836	987	1249	1750	2344	3628	5073	5987	5793	5435	5461	5681	5350	3994	2244	1207	801	693
68	591	630	841	1567	3132	4862	5448	5362	5465	6014	5807	4371	2914	1858	1261	957	796	702	668	734	863	1103	1555	2140	3372	4884	5979	5823	5412	5418	5595	5107	3474	1769	923	661	591
69	543	557	675	1179	2543	4438	5307	5308	5444	5998	5713	4118	2652	1639	1084	832	677	567	546	603	743	949	1347	1943	3086	4671	5960	5866	5402	5360	5475	4769	2898	1341	730	576	543
70	512	521	573	900	2002	3924	5139	5230	5392	5931	5575	3837	2421	1434	931	717	550	490	470	508	614	828	1129	1748	2831	4421	5916	5897	5375	5300	5323	4355	2370	1035	610	531	512
71	488	489	520	717	1531	3400	4919	5133	5290	5816	5373	3510	2190	1181	794	580	481	435	421	444	529	712	967	1523	2599	4140	5837	5896	5342	5221	5158	3871	1826	810	544	505	488
72	460	461	482	586	1159	2824	4640	5011	5158	5657	5078	3216	1935	972	660	495	426	395	378	400	460	584	811	1313	2376	3825	5682	5838	5275	5139	4934	3312	1436	661	502	478	460
73	429	437	454	498	874	2271	4290	4839	4955	5450	4782	2951	1651	796	535	436	368	338	327	348	415	502	699	1057	2148	3481	5489	5728	5169	5019	4634	2765	1083	556	472	451	429

Laboratory: Belling Test Laboratory Co., LTD A2LA Certificate# 4810.01
Unit 401, No. 309 Xinxin Seven Road, Zengcheng District,
Guangzhou, People's Republic of China engineer@etk-utest.com
Report Format Number BL-FM-SA-012



Report No.: BLC2103014E-I

74	405	408	422	444	678	1790	3828	4609	4724	5210	4448	2727	1329	672	458	385	321	299	284	306	352	434	582	884	1853	3174	5240	5580	5003	4838	4283	2201	830	486	446	420	405
75	373	379	395	413	536	1341	3330	4362	4467	4918	4078	2528	1027	560	394	323	289	266	255	271	314	389	485	728	1556	2907	4918	5393	4806	4631	3843	1732	639	445	412	391	373
76	338	345	369	380	440	958	2800	4083	4167	4555	3672	2356	822	445	341	287	254	213	198	237	286	330	422	614	1253	2686	4569	5170	4589	4392	3349	1314	504	413	389	363	338
77	308	316	334	351	385	686	2263	3800	3832	4166	3241	2158	685	386	296	255	204	169	156	180	243	293	360	503	972	2497	4198	4904	4341	4131	2797	963	433	380	360	332	308
78	281	288	303	316	342	503	1779	3463	3462	3692	2854	1893	564	321	258	207	155	114	115	139	195	258	311	420	771	2330	3780	4544	4023	3863	2284	686	388	351	327	300	281
79	253	255	274	285	308	399	1430	3110	3109	3188	2506	1583	427	279	216	163	111	81	77	93	136	210	273	363	647	2133	3366	4172	3706	3519	1834	512	354	314	297	267	253
80	224	227	243	247	271	336	1049	2666	2686	2636	2166	1237	348	238	176	122	73	45	46	54	99	164	230	306	537	1866	2933	3712	3369	3155	1419	401	315	286	262	240	224
81	198	199	212	217	222	279	709	2233	2241	2067	1804	958	287	196	138	88	38	20	16	26	65	124	187	268	428	1541	2548	3219	2995	2759	1064	343	279	252	227	211	198
82	169	172	181	185	192	225	471	1801	1862	1650	1499	716	237	162	113	66	27	14	13	15	38	94	153	226	339	1246	2162	2646	2559	2352	709	289	238	219	202	181	169
83	143	146	153	159	162	179	343	1419	1536	1287	1215	521	194	131	93	58	25	14	10	11	20	67	122	188	290	963	1800	2122	2139	1920	481	244	194	193	170	159	143
84	123	121	123	126	131	148	252	1030	1249	969	920	344	152	107	73	44	20	8	13	9	24	57	98	149	240	731	1493	1678	1855	1552	350	199	168	157	145	130	123
85	99	99	101	103	107	118	174	705	953	700	635	222	115	85	59	34	16	7	0	8	22	42	78	118	188	540	1169	1344	1564	1148	275	164	136	129	120	108	99
86	73	76	78	74	82	89	133	403	636	421	340	139	83	52	38	27	16	9	8	8	11	32	59	97	149	348	874	1006	1257	826	207	129	112	101	92	80	73
87	50	47	56	49	60	64	81	174	254	146	111	69	46	42	28	22	14	9	8	10	16	29	52	71	110	217	580	736	922	505	150	102	85	75	69	44	50
88	35	28	35	29	33	36	35	49	48	12	20	22	26	26	22	13	11	10	11	8	12	18	31	48	69	127	314	479	570	292	103	78	62	56	47	42	35
89	16	12	15	9	16	13	17	18	20	0	0	9	11	12	8	11	9	7	9	9	10	16	23	36	35	58	99	200	235	122	61	46	35	28	21	19	16
90	0	0	0	0	0	0	0	0	0	0	0	0	0	0	0	0	0	0	0	0	0	0	0	0	0	0	0	0	0	0	0	0	0	0	0	0	0
91	0	0	0	0	0	0	0	0	0	0	0	0	0	0	0	0	0	0	0	0	0	0	0	0	0	0	0	0	0	0	0	0	0	0	0	0	0
92	0	0	0	0	0	0	0	0	0	0	0	0	0	0	0	0	0	0	0	0	0	0	0	0	0	0	0	0	0	0	0	0	0	0	0	0	0

Laboratory: Belling Test Laboratory Co., LTD A2LA Certificate# 4810.01
Unit 401, No. 309 Xinxin Seven Road, Zengcheng District,
Guangzhou, People's Republic of China engineer@etk-utest.com
Report Format Number BL-FM-SA-012



Certificate#4810.01

[illegible]



Certificate#4810.01

[illegible]



Certificate#4810.01

[illegible]



Certificate#4810.01

[illegible]



Certificate#4810.01

[illegible]



Report No.: BLC2103014E-I

BUG

Lum. Classification System (LCS)

<u>LCS Zone</u>	<u>Lumens</u>	<u>%Lamp</u>	<u>%Lum</u>
FL (0-30)	2178.7	10.8	10.8
FM (30-60)	6333.9	31.3	31.3
FH (60-80)	3140.9	15.5	15.5
FVH (80-90)	243.1	1.2	1.2
BL (0-30)	1640.1	8.1	8.1
BM (30-60)	4313.6	21.3	21.3
BH (60-80)	2257.3	11.1	11.1
BVH (80-90)	155.6	0.8	0.8
UL (90-100)	0.0	0.0	0.0
UH (100-180)	0.0	0.0	0.0
Total	20263.2	100.1	100.0
BUG Rating	B3-U0-G3		



Report No.: BLC2103014E-I

2.2 Electrical, Photometric and Chromaticity Measurements*(Refer to Work Instruction BL-QP-033)*

Test date	2021-3-17	Test Ambient:	25.2 °C
Test Orientation	As intended	Stabilization Time (min)	90
Model Number	IK-SBSLG2-150W-304050K-HV(150W,40K) (Tested at 50% CCT Setting)		

Electrical Measurement:

Sample No.	Voltage (Vac)	Frequency (Hz)	Current (A)	Power (W)	Power Factor	THD %
BLC210301 4E-I1	277.0	60	0.540	149.37	0.998	2.99
	480.0	60	0.318	148.18	0.971	4.05
DLC Pass Criteria					$\geq 0.9(-3\%)$	$\leq 20(+5)$

Chromaticity Measurement - Sphere-Spectroradiometer Method:

Parameter	Result	Special Color Rendering Indices			
Test Voltage (V)	277.0	R1	70	R9	-31
Frequency (Hz)	60	R2	81	R10	55
CCT (K)	3723	R3	90	R11	69
Duv	-0.0010	R4	72	R12	78
Chromaticity (x, y)	x=0.3926 y=0.3818	R5	70	R13	72
Chromaticity (u', v')	u(u')=0.2311 v'=0.5056	R6	74	R14	94
Color Rendering Index (CRI)	73	R7	79	R15	63
R9	-31	R8	50	--	--
Rf	75	--	--	--	--
Rg	95	--	--	--	--
Rcs,h1(%)	-17				

Photometric Measurement – Sphere-Spectroradiometer Method:

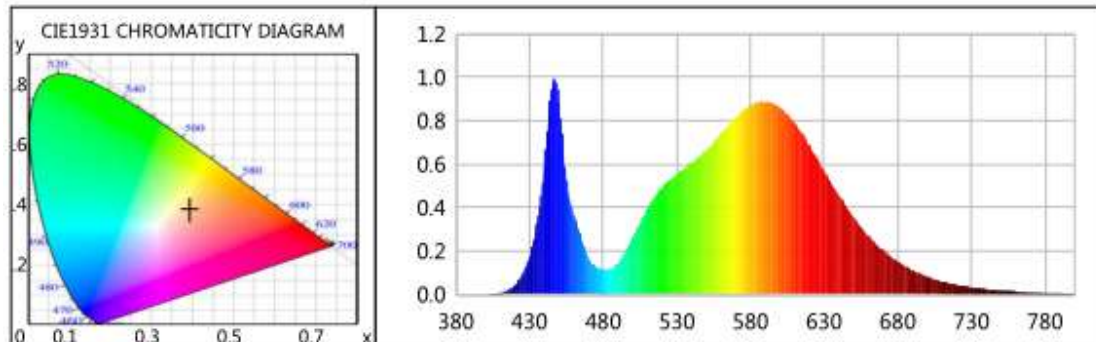
Parameter	Result		DLC V5.1 Pass Criteria
Test Voltage (V)	277.0	480.0	--
Frequency (Hz)	60	60	
Total Luminous (lm)	22762.5	22404.8	>=10000(-10%)
Luminous Efficacy (lm/W)	152.39	151.20	Premium: >= 120(-3%)
Most worst Luminous/Highest Watts	150.00		



Certificate#4810.01

Report No.: BLC2103014E-I

Spectral Power Distribution & Chromaticity Diagram



WL(nm)	PL	PE(mW/nm)	WL(nm)	PL	PE(mW/nm)	WL(nm)	PL	PE(mW/nm)
380	0.0003	0.1527	525	0.5264	233.0042	670	0.2027	89.7110
385	0.0003	0.1409	530	0.5526	244.6145	675	0.1745	77.2412
390	0.0005	0.2121	535	0.5777	255.7355	680	0.1511	66.8938
395	0.0008	0.3762	540	0.6058	268.1521	685	0.1295	57.3257
400	0.0008	0.3537	545	0.6317	279.6333	690	0.1119	49.5102
405	0.0028	1.2216	550	0.6638	293.8071	695	0.0967	42.8059
410	0.0073	3.2505	555	0.6994	309.5917	700	0.0820	36.3007
415	0.0181	8.0210	560	0.7397	327.4189	705	0.0706	31.2339
420	0.0420	18.5983	565	0.7776	344.1954	710	0.0599	26.5051
425	0.0880	38.9363	570	0.8145	360.5545	715	0.0511	22.6012
430	0.1742	77.1285	575	0.8491	375.8553	720	0.0439	19.4350
435	0.3196	141.4663	580	0.8732	386.4991	725	0.0375	16.6012
440	0.5923	262.1635	585	0.8859	392.1606	730	0.0316	13.9998
445	0.9502	420.5906	590	0.8895	393.7378	735	0.0282	12.4938
450	0.8900	393.9692	595	0.8808	389.8903	740	0.0232	10.2559
455	0.5278	233.6140	600	0.8631	382.0587	745	0.0208	9.1896
460	0.3678	162.8077	605	0.8304	367.5666	750	0.0171	7.5613
465	0.2640	116.8686	610	0.7885	349.0305	755	0.0152	6.7230
470	0.1659	73.4363	615	0.7406	327.8371	760	0.0135	5.9694
475	0.1261	55.8397	620	0.6869	304.0557	765	0.0114	5.0560
480	0.1150	50.8835	625	0.6273	277.6546	770	0.0099	4.3671
485	0.1181	52.2845	630	0.5686	251.6674	775	0.0082	3.6427
490	0.1451	64.2302	635	0.5117	226.5081	780	0.0051	2.2577
495	0.1969	87.1707	640	0.4569	202.2653	785	0.0058	2.5524
500	0.2621	116.0097	645	0.4034	178.5800	790	0.0056	2.4823
505	0.3276	144.9939	650	0.3544	156.8723	795	0.0037	1.6247
510	0.3936	174.2364	655	0.3096	137.0552	800	0.0042	1.8636
515	0.4476	198.1277	660	0.2700	119.5106			
520	0.4902	216.9987	665	0.2336	103.3827			

Laboratory: Belling Test Laboratory Co., LTD A2LA Certificate# 4810.01

Unit 401, No. 309 Xinxin Seven Road, Zengcheng District,
Guangzhou, People's Republic of China engineer@etk-utest.com

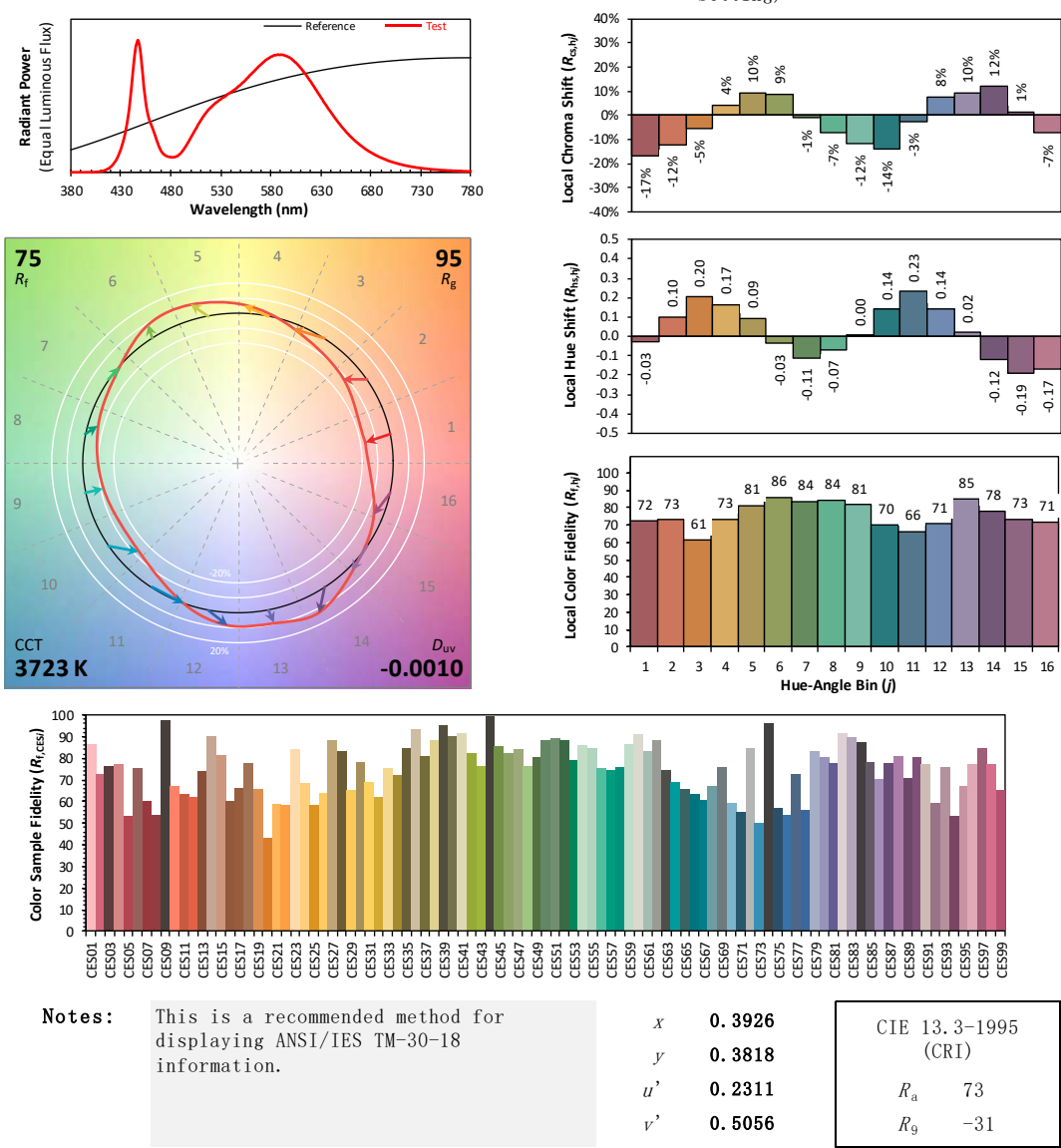
Report Format Number BL-FM-SA-012



TM30

ANSI/IES TM-30-18 Color Rendition Report

Source: BXEM-30C-12H-6C Manufacturer: IKIO LED LIGHTING
Date: 2021/3/17 Model: IK-SBSLG2-150W-304050K-HV (150W, 40K) (Tested at 50% CC Setting)



Colors are for visual orientation purposes only. Created with the ANSI/IES TM-30-18 Calculator Version 2.00.



Report No.: BLC2103014E-I

2.3 Electrical, Photometric and Chromaticity Measurements*(Refer to Work Instruction BL-QP-033)*

Test date	2021-3-17	Test Ambient:	25.2 °C
Test Orientation	As intended	Stabilization Time (min)	90
Model Number	IK-SBSLG2-150W-304050K-HV(150W) 50(Tested at 100% CCT Setting)		

Electrical Measurement:

Sample No.	Voltage (Vac)	Frequency (Hz)	Current (A)	Power (W)	Power Factor	THD %
BLC210301 4E-I1	277.0	60	0.543	150.39	0.999	3.45
	480.0	60	0.318	148.57	0.972	3.83
DLC Pass Criteria					$\geq 0.9(-3\%)$	$\leq 20(+5)$

Chromaticity Measurement - Sphere-Spectroradiometer Method:

Parameter	Result	Special Color Rendering Indices			
Test Voltage (V)	277.0	R1	68	R9	-41
Frequency (Hz)	60	R2	77	R10	45
CCT (K)	4831	R3	84	R11	68
Duv	0.0014	R4	71	R12	42
Chromaticity (x, y)	x=0.3504 y=0.3586	R5	69	R13	69
Chromaticity (u', v')	u(u')=0.2123 v'=0.4888	R6	68	R14	91
Color Rendering Index (CRI)	71	R7	80	R15	61
R9	-41	R8	53	--	--
Rf	72	--	--	--	--
Rg	95	--	--	--	--
Rcs,h1(%)	-19				

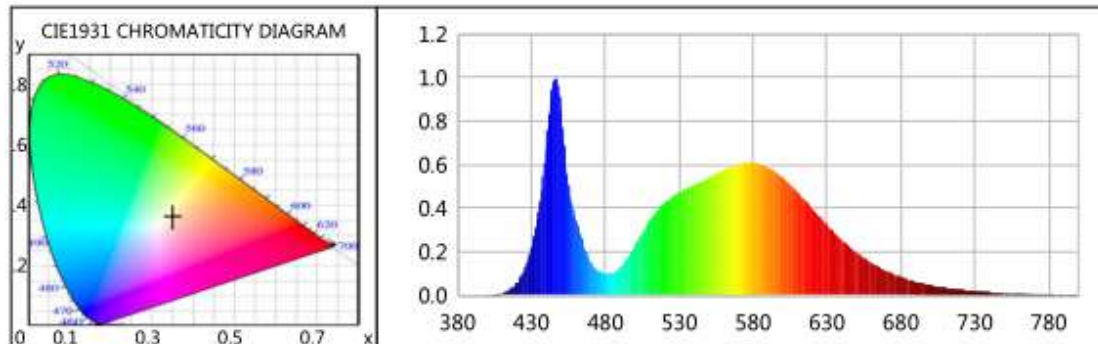
Photometric Measurement – Sphere-Spectroradiometer Method:

Parameter	Result		DLC V5.1 Pass Criteria
Test Voltage (V)	277.0	480.0	--
Frequency (Hz)	60	60	
Total Luminous (lm)	21332.8	21120.7	>=10000(-10%)
Luminous Efficacy (lm/W)	141.85	142.16	Premium: >= 120(-3%)
Most worst Luminous/Highest Watts	140.44		



Report No.: BLC2103014E-I

Spectral Power Distribution & Chromaticity Diagram



WL(nm)	PL	PE(mW/nm)	WL(nm)	PL	PE(mW/nm)	WL(nm)	PL	PE(mW/nm)
380	0.0008	0.4386	525	0.4506	258.7900	670	0.1122	64.4410
385	0.0007	0.3867	530	0.4726	271.4115	675	0.0972	55.8098
390	0.0005	0.2620	535	0.4893	280.9916	680	0.0847	48.6423
395	0.0005	0.2710	540	0.5077	291.5796	685	0.0732	42.0127
400	0.0015	0.8759	545	0.5228	300.2866	690	0.0633	36.3365
405	0.0032	1.8261	550	0.5392	309.6846	695	0.0546	31.3298
410	0.0095	5.4649	555	0.5578	320.3385	700	0.0470	27.0169
415	0.0244	14.0370	560	0.5761	330.8686	705	0.0397	22.8172
420	0.0555	31.8755	565	0.5905	339.1347	710	0.0350	20.0938
425	0.1147	65.8575	570	0.6016	345.4957	715	0.0296	17.0113
430	0.2197	126.1775	575	0.6091	349.7978	720	0.0254	14.5905
435	0.3896	223.7705	580	0.6103	350.5003	725	0.0209	12.0312
440	0.6820	391.6998	585	0.6011	345.2570	730	0.0195	11.1746
445	0.9870	566.8766	590	0.5865	336.8563	735	0.0162	9.3214
450	0.8492	487.7106	595	0.5673	325.8442	740	0.0135	7.7796
455	0.5032	288.9897	600	0.5414	310.9384	745	0.0114	6.5528
460	0.3480	199.8530	605	0.5080	291.7787	750	0.0115	6.5991
465	0.2400	137.8322	610	0.4747	272.6302	755	0.0083	4.7437
470	0.1508	86.6231	615	0.4361	250.4768	760	0.0078	4.4711
475	0.1132	65.0208	620	0.3976	228.3333	765	0.0062	3.5725
480	0.1005	57.7224	625	0.3601	206.7951	770	0.0054	3.0858
485	0.1026	58.9128	630	0.3227	185.3396	775	0.0050	2.8888
490	0.1267	72.7520	635	0.2874	165.0755	780	0.0041	2.3773
495	0.1711	98.2495	640	0.2535	145.6128	785	0.0021	1.2183
500	0.2261	129.8524	645	0.2233	128.2685	790	0.0031	1.7626
505	0.2838	162.9987	650	0.1951	112.0290	795	0.0028	1.5932
510	0.3402	195.3808	655	0.1720	98.7780	800	0.0021	1.2067
515	0.3863	221.8701	660	0.1488	85.4337			
520	0.4225	242.6700	665	0.1295	74.3745			

Laboratory: Belling Test Laboratory Co., LTD A2LA Certificate# 4810.01

Unit 401, No. 309 Xinxin Seven Road, Zengcheng District,
Guangzhou, People's Republic of China engineer@etk-utest.com

Report Format Number BL-FM-SA-012



Report No.: BLC2103014E-I

TM30

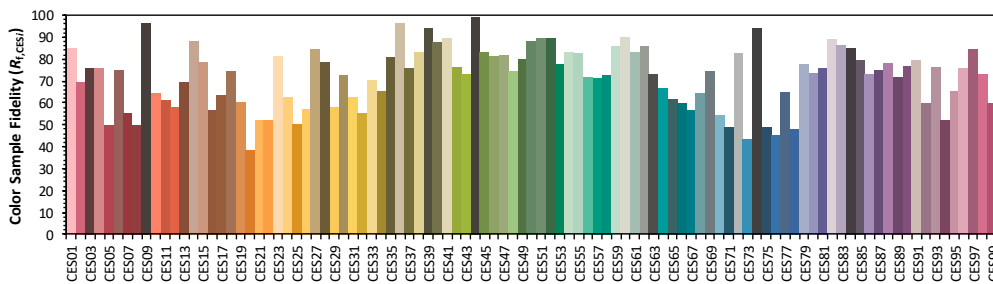
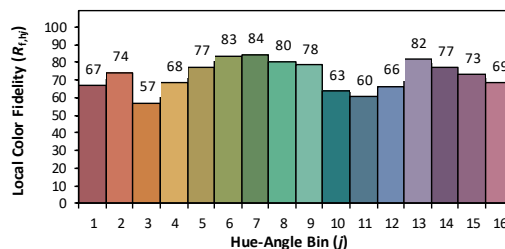
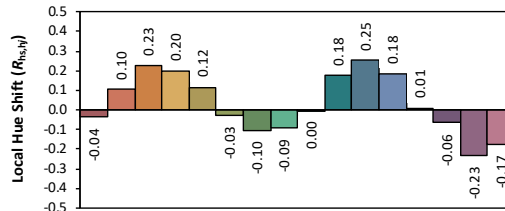
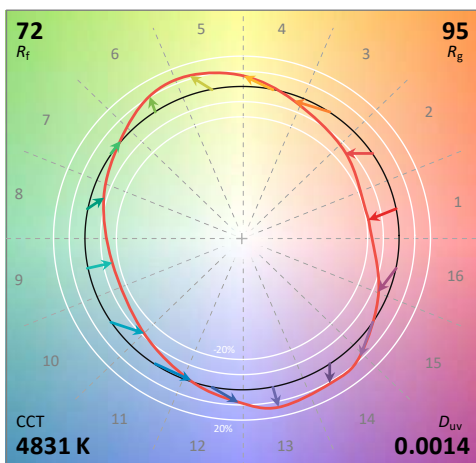
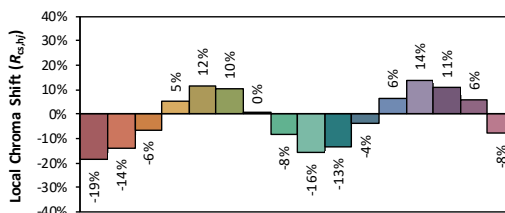
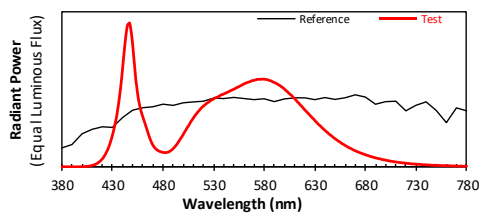
ANSI/IES TM-30-18 Color Rendition Report

Source: BXEM-30C-12H-6C

Manufacturer: IK10 LED LIGHTING

Date: 2021/3/17

Model: IK-SBSLG2-150W-304050K-
HV(150W,50K) (Tested at 100% CC
Setting)



Notes: This is a recommended method for displaying ANSI/IES TM-30-18 information.

x 0.3504
 y 0.3586
 u' 0.2123
 v' 0.4888

CIE 13.3-1995
(CRI)

R_a 71
 R_g -41

Colors are for visual orientation purposes only. Created with the ANSI/IES TM-30-18 Calculator Version 2.00.

Laboratory: Belling Test Laboratory Co., LTD A2LA Certificate# 4810.01

Unit 401, No. 309 Xinxin Seven Road, Zengcheng District,
Guangzhou, People's Republic of China engineer@etk-utest.com

Report Format Number BL-FM-SA-012



Report No.: BLC2103014E-I

3. Test Equipment

Equipment Name	Model No.	Serial No.	Next Calibration Date
Goniophotometric System	GPM-3000	DYHXF120001	2022-01-18
AC Power Source	CHP-500	DYBWD010159	2022-01-25
Total Luminous Flux Standard Lamp	24V/150W	DYJYR040040	2022-01-24
Digital Power Meter	WT500	DYDWQ20010	2022-01-25
Integral Sphere (2M)	2M	DYJCE120067	2022-01-18
Digital Power Meter	WT500	DYDWQ20006	2022-01-25
Optical Color and Electrical Measurement System	CMS-3000S	DYJCE120067	2022-01-18
Expand Uncertainty: Photometric Measurement (Sphere): 2.08%, k=2 Chromaticity Measurement(Sphere):25.6K, k=2 Photometric Measurement(Goniophotometer):2.645%, k=2			

******* END OF REPORT *******